

ERGOVISION

ErgoVision

Ergonomic Assessment Report

Assessment Type	REBA + RULA
Job / Task	Assessment
Worker Code	☒
Assessor	ErgoVision
Site	☒
Date	20 Apr 2026, 15:51

This report was generated on-device by ErgoVision. All posture analysis was performed locally using BlazePose ML Kit. No video data leaves the device.

Executive Summary

REBA Score

9

Action Level 4 ⚠ Very High Risk



RULA Score

6

Action Level 3 ⚠ High Risk



This assessment identified Action Level 4 risk requiring immediate intervention.

Top At-Risk Body Segments

- Trunk
- Neck
- Upper Arm (R)

Peak Score: 5 | P90 Angle: 30.8°

Peak Score: 4 | P90 Angle: 30.0°

Peak Score: 4 | P90 Angle: 26.2°

Duration
25s

Frames Analysed
375

Capture Quality
A ⚠ High Quality

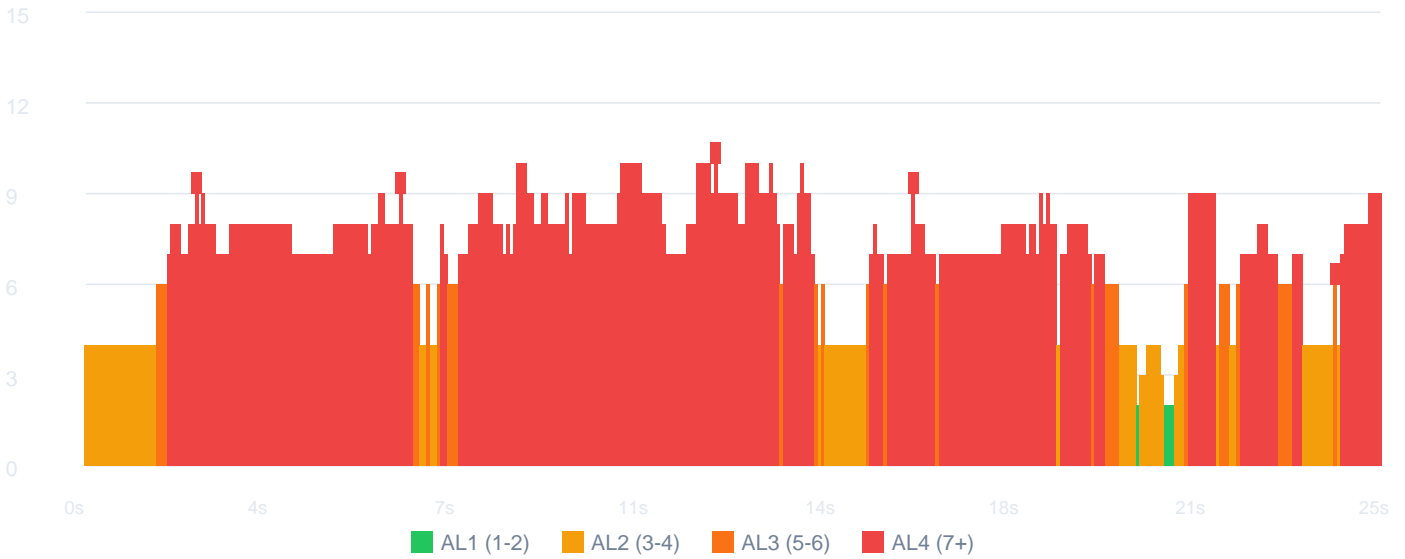
Activity Score
2 / 3

Time in Risk Distribution

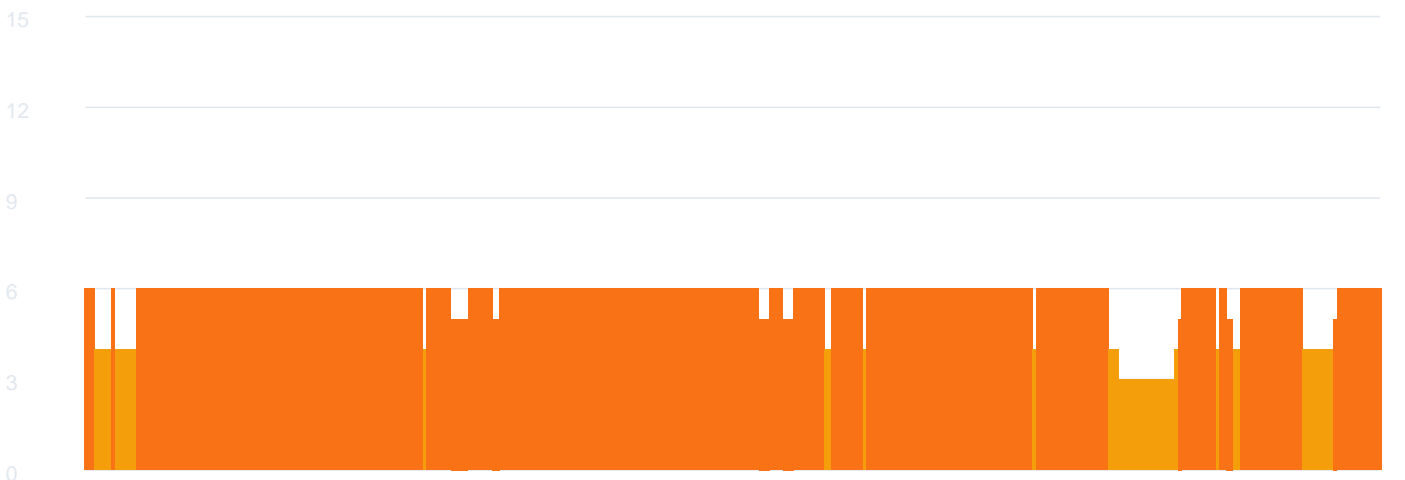
Action Level 1		1.1%
Action Level 2		17.9%
Action Level 3		8.3%
Action Level 4		72.8%

Score Timeline

REBA Score Over Time



RULA Score Over Time



Worst Offender Timestamps

- #1 12.1s Trunk REBA 10 RULA 6 (AL4)
- #2 6.1s Trunk REBA 9 RULA 6 (AL4)
- #3 2.1s Trunk REBA 9 RULA 6 (AL4)
- #4 15.9s Trunk REBA 9 RULA 6 (AL4)
- #5 24.1s Trunk REBA 6 RULA 5 (AL3)

Worst Offender Analysis

#1 Offender #1 · 12.1s
 REBA: 10 RULA: 6 Action Level 4 Very High Risk

POSTURE EVIDENCE AL4

#1 · 12.1s Trunk · -30° · REBA 10 · RULA 6 · AL4

Primary Segment
 Trunk -30.0°

Secondary Segment
 Neck -30.0°

Offence Type
 Repetitive Pattern

Event Duration
 0s

Trunk completed repeated cycles above the 4/min threshold highly repetitive movement pattern.

Recommended Intervention
 Reposition materials to be directly in front of worker. Check conveyor side placement.

#2 Offender #2 · 6.1s
 REBA: 9 RULA: 6 Action Level 4 Very High Risk

POSTURE EVIDENCE AL4

#2 · 6.1s Trunk · -30° · REBA 9 · RULA 6 · AL4

Primary Segment
Trunk -30.0°

Secondary Segment
Neck -21.2°

Offence Type
Combined Risk Factors

Event Duration
0s

Trunk flexed 30° with Neck at 21° combined postural and movement risk.

Recommended Intervention

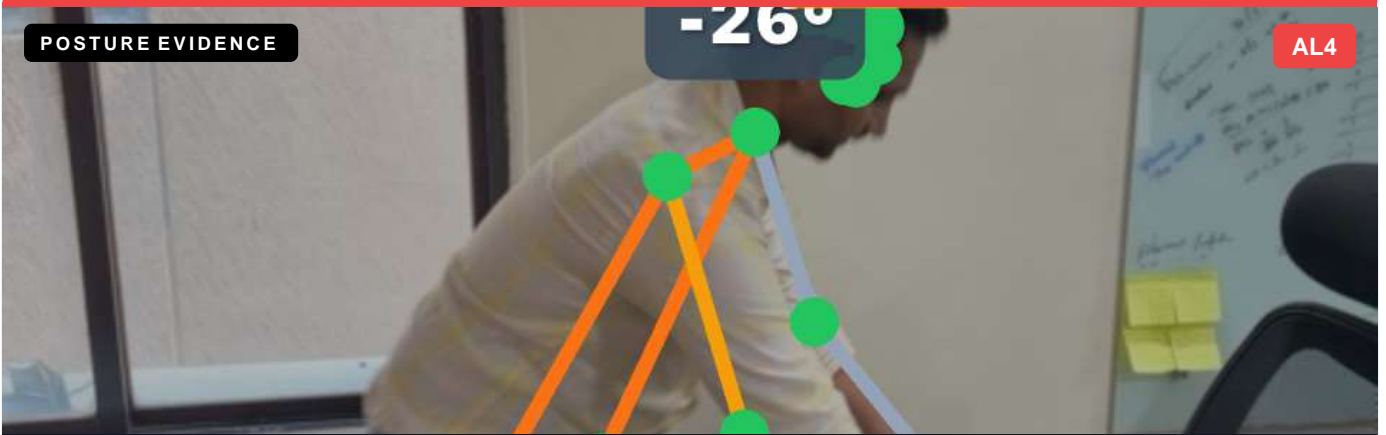
Centre the work piece directly in front of the worker. Eliminate off-centre reaching by repositioning input and output bins.

#3

Offender #3 - 2.1s

REBA: 9 RULA: 6 Action Level 4 Very High Risk

POSTURE EVIDENCE



#3 - 2.1s

Trunk -26° · REBA 9 · RULA 6 · AL4

Primary Segment
Trunk -25.8°

Secondary Segment
Neck -18.1°

Offence Type
Repetitive Pattern

Event Duration
0s

Trunk completed repeated cycles above the 4/min threshold highly repetitive movement pattern.

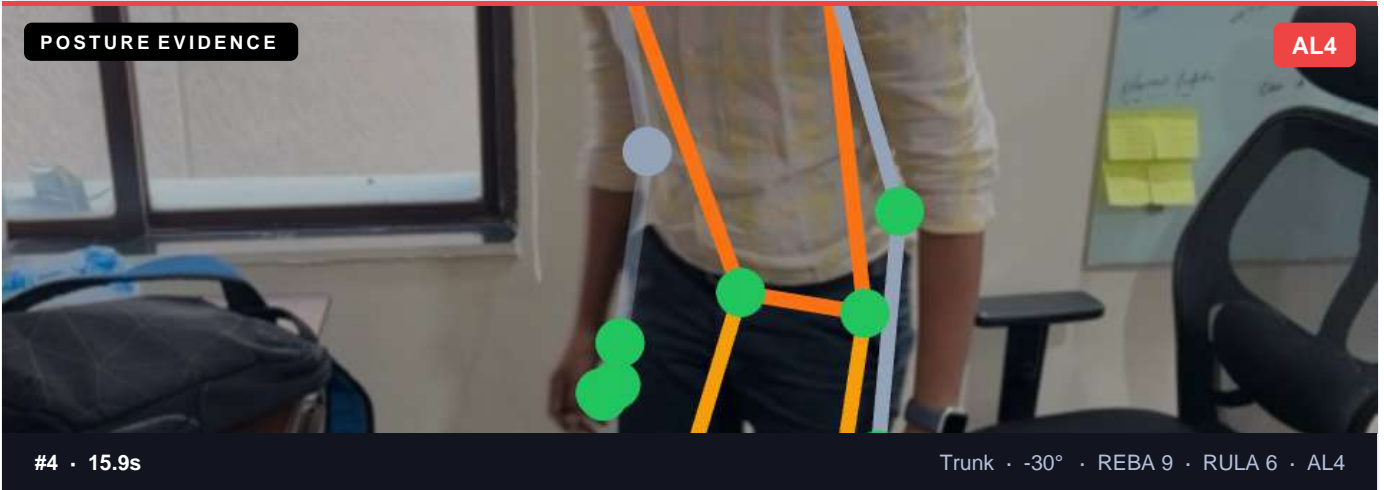
Recommended Intervention

Reposition materials to be directly in front of worker. Check conveyor side placement.

#4

Offender #4 - 15.9s

REBA: 9 RULA: 6 Action Level 4 Very High Risk



Primary Segment
Trunk \angle -30.0°

Secondary Segment
Neck \angle -30.0°

Offence Type
Repetitive Pattern

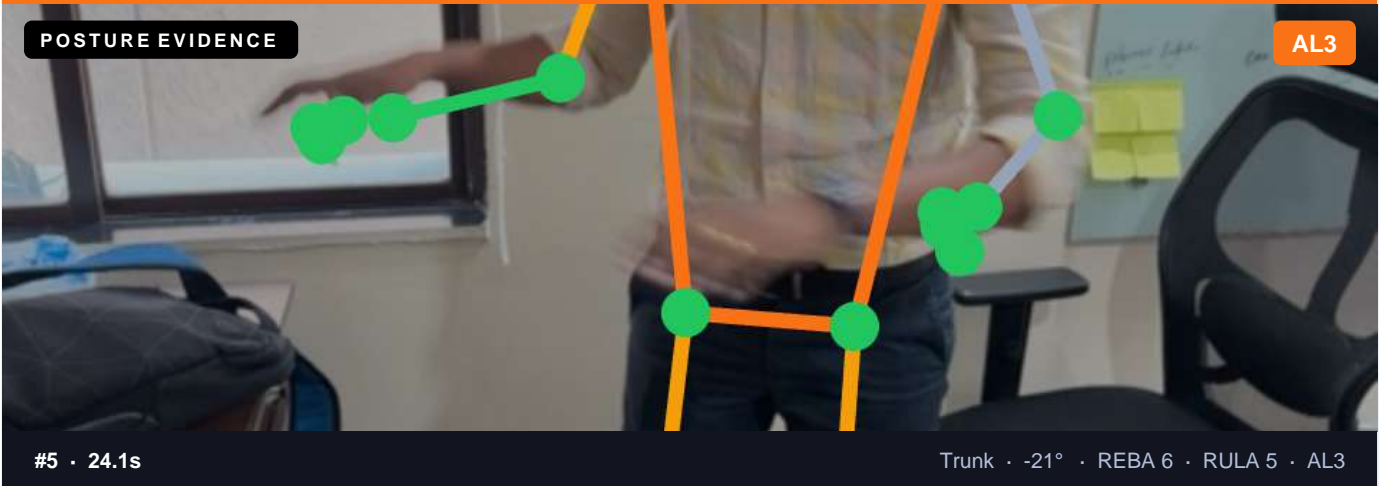
Event Duration
0s

Trunk completed repeated cycles above the 4/min threshold \angle highly repetitive movement pattern.

Recommended Intervention

Reposition materials to be directly in front of worker. Check conveyor side placement.

#5 Offender #5 · 24.1s
REBA: 6 RULA: 5 Action Level 3 \angle High Risk



#5 · 24.1s

Trunk · -21° · REBA 6 · RULA 5 · AL3

Primary Segment

Trunk ☒ -20.6°

Offence Type

Repetitive Pattern

Secondary Segment

Neck ☒ -16.5°

Event Duration

0s

Trunk completed repeated cycles above the 4/min threshold ☒ highly repetitive movement pattern.

Recommended Intervention

Review the workstation layout to reduce exposure for the identified body segment. Consult with an ergonomist for specific modification guidance.

Full Segment Breakdown

Segment	Peak Angle	P50 Angle	P90 Angle	Peak Score	Time > AL2	Sustained Time	Reps/Min
Trunk	79.9°	26.9°	30.8°	5	24.2s	0.0s	16.8
Neck	60.8°	18.5°	30.0°	4	22.5s	0.0s	19.2
Upper Arm (L)	39.1°	7.0°	27.1°	0	0.0s	0.0s	19.2
Upper Arm (R)	47.4°	8.8°	26.2°	4	3.1s	0.0s	21.6
Lower Arm (L)	75.5°	26.3°	49.7°	0	0.0s	0.0s	28.8
Lower Arm (R)	62.3°	26.9°	37.3°	2	0.0s	0.0s	26.4
Wrist (L)	56.5°	27.0°	39.6°	0	0.0s	0.0s	33.6
Wrist (R)	82.1°	31.9°	58.0°	3	22.7s	0.0s	36.0
Legs (L)	67.0°	21.6°	32.7°	4	2.3s	0.0s	21.6
Legs (R)	49.1°	17.5°	32.7°	4	2.3s	0.0s	21.6

Activity Score Explanation

Activity Score: 2 / 3

The activity score reflects temporal risk factors observed during the assessment. A score of 0 indicates no additional temporal risk; 1-3 indicates increasing temporal contribution from sustained holds, repetitive patterns, or rapid movements.

● Repetitive Patterns (Triggered)

Trunk: 16.8 reps/min
 Neck: 19.2 reps/min
 Upper Arm (L): 19.2 reps/min
 Upper Arm (R): 21.6 reps/min
 Lower Arm (L): 28.8 reps/min
 Lower Arm (R): 26.4 reps/min
 Wrist (L): 33.6 reps/min
 Wrist (R): 36.0 reps/min
 Legs (L): 21.6 reps/min
 Legs (R): 21.6 reps/min

● Rapid Movements (Triggered)

Trunk: rapid movement at 6.1s

Intervention Action Plan

Body Segment	Finding	Recommended Intervention	Priority
Trunk	Trunk completed repeated cycles above the 4/min threshold ❌ highly repetitive movement pattern.	Reposition materials to be directly in front of worker. Check conveyor side placement.	Immediate
Trunk	Trunk flexed 30° with Neck at 21° ❌ combined postural and movement risk.	Centre the work piece directly in front of the worker. Eliminate off-centre reaching by repositioning input and output bins.	Immediate
Trunk	Trunk completed repeated cycles above the 4/min threshold ❌ highly repetitive movement pattern.	Reposition materials to be directly in front of worker. Check conveyor side placement.	Immediate
Trunk	Trunk completed repeated cycles above the 4/min threshold ❌ highly repetitive movement pattern.	Reposition materials to be directly in front of worker. Check conveyor side placement.	Immediate
Trunk	Trunk completed repeated cycles above the 4/min threshold ❌ highly repetitive movement pattern.	Review the workstation layout to reduce exposure for the identified body segment. Consult with an ergonomist for specific modification guidance.	High

Sign-Off

Assessor Signature

Date

Supervisor / Manager Signature

Date

Assessment Metadata

Capture Quality	A ❌ High Quality	Total Frames	375
Avg Landmark Confidence	84.6%	Device	On-device (local processing)
Duration	25s	App Version	ErgoVision v1.0.0

Report generated by ErgoVision. All analysis performed on-device using BlazePose ML Kit. No video data was transmitted externally.